

Logistics Mapper

Analyse and present your global trade lanes and key accounts

Logistics
Mapper

Logistics Mapper is a powerful software information system for international supply chain data. It is ideally suited for logistics management, controlling and key account management on both top and operational levels:

- Central database for global shipment and master data
- Flexible drag&drop generation and administration of reports (e.g. profit per customer group per country)
- Visually appealing presentation of all reports as tables, maps and charts
- Integrated authorisation concept to administer users and user groups
- Operates in single workstation or network installation mode

Logistics Mapper – Basic Data

All analyses are based on more than 80 data fields for each single shipment:

- Shipment ID, date and mode of transportation
- Name and address of sending and receiving customer
- Business unit, branch, port of departure/destination
- Carrier
- Transport units (weight, volume, containers etc.)
- Commercial figures (expenses, turnover, profit in local and enterprise currency)
- Involved shipping and receiving agents

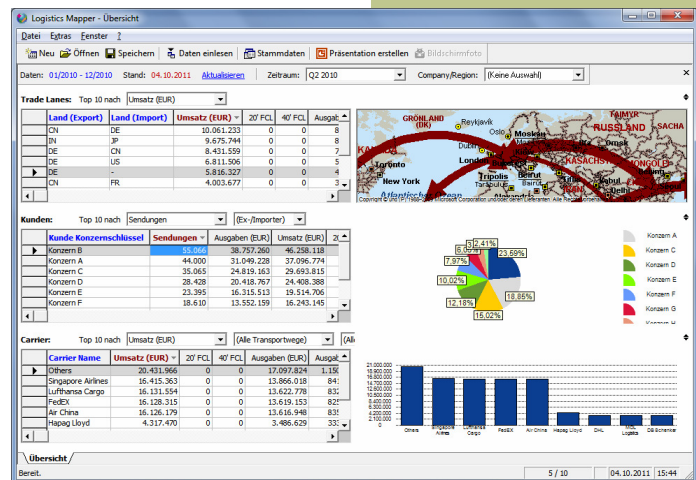
Even more data fields can be added on request.

Logistics Mapper – Features

- Flexible generation and storage of reports
- Calculated fields and special comparison mode
- Map representation with arrows, lines and charts
- Animated maps based on time series
- Drill-down to trade lane / customer level and to shipment details
- Automatic master data alignment during data import
- Support for the compilation of presentations

Logistics Mapper Benefits

- Powerful business intelligence platform based on a standardised global shipment database
- Efficient analysis of global businesses – down to details level if needed
- Seamless key account reports across country and organisational borders
- Support of a continuous central controlling for multi-company enterprises



Logistics Mapper includes a dashboard that summarises key facts

PROLOGOS

Planung und Beratung
Dr. Gietz, Henneberg, Kindt OHG

Tempowerkring 4

21079 Hamburg

GERMANY

Phone +49 (0) 40 79012 - 310

Fax +49 (0) 40 79012 - 319

Web www.prologos.de

Email info@prologos.de